



COMPRESSOR COOLING UNITS – OUTDOOR

- Suitable for most outdoor applications without filter
- Stainless steel models comply to NEMA Type 4X
- Adjustable electronic controller with display (rear)
- All models fitted with condensate evaporation
- Virtually maintenance free

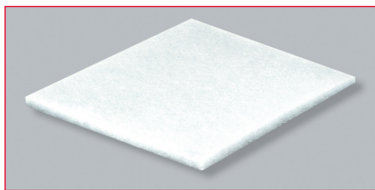


Technical data ComCompact Outdoor (with frame - Type: OC)

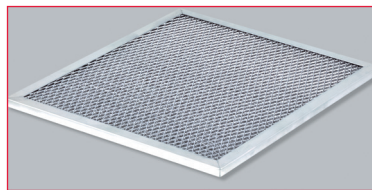
ORDER-NO.	TYPE	SUPPLY VOLTAGE (V/Hz)*	COOLING CAPACITY L35/L35 (W)	OPERATING TEMPERATURE	SETTING RANGE	WEIGHT (KG)	DIMENSIONS LxBxT	HOUSING MATERIAL	CERTIFICATION
932000	OC 5704	230 / 50-60	300	-20°C - +55°C	+20°C - +50°C	15,2	480x250x190	mild steel, RAL 7035	CE, cULus, cURus
932001	OC 5705	230 / 50-60	550	-20°C - +55°C	+20°C - +50°C	30,0	830x304x270	mild steel, RAL 7035	CE, cULus, cURus
932002	OC 5708	230 / 50-60	750	-20°C - +55°C	+20°C - +50°C	30,0	830x304x270	mild steel, RAL 7035	CE, cULus, cURus
932003	OC 5709	230 / 50-60	850	-20°C - +55°C	+20°C - +50°C	32,0	830x304x270	mild steel, RAL 7035	CE, cULus, cURus
932004	OC 5710	230 / 50-60	1000	-20°C - +55°C	+20°C - +50°C	38,0	900x304x270	mild steel, RAL 7035	CE, cULus, cURus
932005	OC 5715	230 / 50-60	1500	-20°C - +55°C	+20°C - +50°C	42,0	1150x395x270	mild steel, RAL 7035	CE, cULus, cURus
932006	OC 5720	230 / 50-60	2000	-20°C - +55°C	+20°C - +50°C	49,0	1150x395x270	mild steel, RAL 7035	CE, cULus, cURus
932007	OC 5726	400/460 / 50-60 (2ph)	2500	-20°C - +55°C	+20°C - +50°C	80,0	1550x457x355	mild steel, RAL 7035	CE, cULus, cURus
932008	OC 5731	400/460 / 50-60 (2ph)	3000	-20°C - +55°C	+20°C - +50°C	77,2	1550x457x355	mild steel, RAL 7035	CE, cULus, cURus
932009	OC 5741	400/460 / 50-60 (2ph)	4000	-20°C - +55°C	+20°C - +50°C	83,0	1550x457x355	mild steel, RAL 7035	CE, cULus, cURus

* special voltage on request

Available accessories:



Fibre filter media



Aluminium filter



Filter holder stainless

The information described on this data sheet contains descriptions or characteristics, which could not apply in the described way in the concrete case. The information of the products can also change in the course of development. The desired characteristics are only binding in the case that they have been explicitly agreed with a contract conclusion. Delivery possibilities and technical changes reserved.

The mentioned technical data have been determined under labor conditions by universal test instructions. Only insofar characteristics are ensured. The test for the suitability for the intended use scheduled by the purchaser is incumbent on the purchaser; we do not take warranty for that. Errors reserved. Status: 08/2018