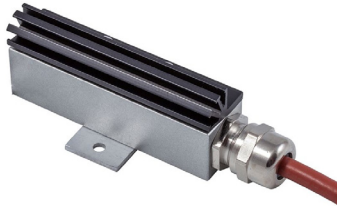


CONTROL CABINET HEATER

P-SSM 20W-30W



- High safety and energy efficiency
- Multi-voltage capable (110 - 240V AC/DC)
- High degree of protection with IP54
- Compact design

EAC CE UKCA **MADE IN GERMANY**

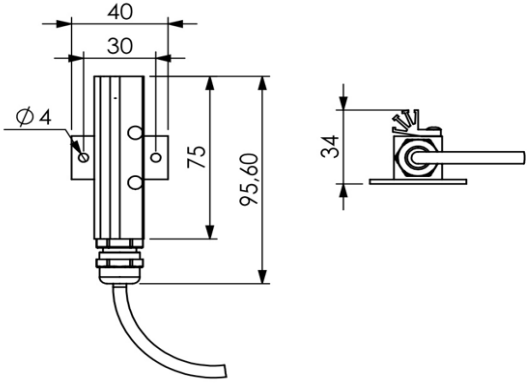
The "P-ssm" switch cabinet heater is a compact and reliable solution for industrial applications under demanding conditions. Its IP54 protection provides optimum protection against dust and splash water in harsh environments. Due to the PTC effect, the heating output automatically adapts to the temperature conditions and thus reliably protects electrical components from condensation and frost. Its compact design means that it can also be easily integrated into confined installation situations.

TECHNICAL DATA

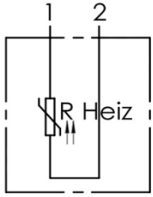
| Art.-No. | 820000 | 820001 |
|---|--|--------|
| Voltage ¹ | 110 - 240V AC/DC | |
| Inrush current at 230V | 1,5A | 2,5A |
| Power at 10°C | 20W | 30W |
| Recommended fuse | 4A(t) | |
| Weight | approx 155g | |
| Dimensions (LxWxD) | 95,6×40×34mm | |
| Protection type | IP54 | |
| Protection class | II (Protective insulation) | |
| Operating temperature | up to -40°C | |
| Storage temperature | -40°C to +70°C | |
| Operating humidity/ Storage humidity | < 90% RH (non-condensing) | |
| Heating element | PTC-Heating element | |
| Mounting connection ² | Screw-mounting | |
| Type of connection ³ | 0,25m Silicon-Connection cable 2×0,75mm ² | |
| Housing material | Aluminium profile, anodized | |
| Mounting position | Vertical | |
| Certifications | CE, EAC, UKCA | |

(1) Special voltage 24V AC/DC available on request
 (2) Other mounting types possible on special request
 (3) Other cable lengths possible on special request

TECHNICAL DRAWING (SPECIFICATION IN MM)



WIRING DIAGRAMM



| U | bn (1) | bl (2) |
|---------------|--------|--------|
| 110 - 240V DC | + | - |
| 110 - 240V AC | L1 | N (L2) |

STATUS: 04|2025

The information on this datasheet contains descriptions and performance characteristics that may not always apply in the specific use case described or may change due to product development. The desired performance characteristics are only binding if expressly agreed upon at the time of contract conclusion. The mentioned technical data has been determined under laboratory conditions according to generally accepted testing procedures. Only to this extent are properties assured. The examination of suitability for the intended purpose or use under operating conditions lies with the customer. We do not provide any warranty for this. Errors, availability, and technical changes are subject to change without notice.