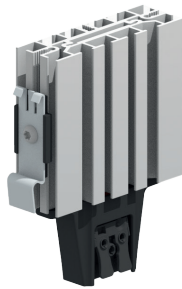


# PTC-CONTROL CABINET HEATER

## P70 20W-75W



- ▶ High safety and energy efficiency
- ▶ Multi-voltage capable (110 - 240V AC/DC)
- ▶ Thermal decoupling from the DIN-rail
- ▶ Easy mounting with DIN clip
- ▶ Quick and safe connection using pressure clamp
- ▶ Optional touch protection can be retrofitted

HEATING

**CE** **RU** **MADE IN GERMANY**

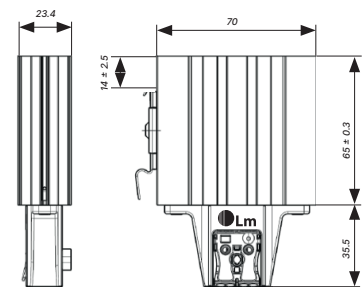
The P70 20-75W cabinet heater is a compact, powerful heater for heating air in closed, electrical enclosures. It consists of a PTC heating element in an aluminum profile and achieves up to 75W without a fan using the chimney effect. The heater protects components and housings from moisture and frost and is available for operating voltages of 110 - 240V AC/DC in four power variants (20-75W). The dynamic power adjustment, which depends on the ambient temperature, ensures a high level of operational reliability. Touch protection and top protection can be retrofitted as an option.

## TECHNICAL DATA

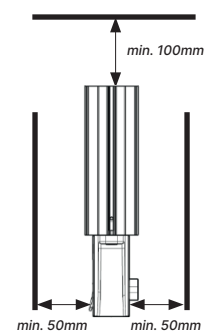
Art.-No.	825002	825003	825004	825005
<b>Voltage</b>	110 – 240V AC/DC			
<b>Inrush current at 115V / 230V</b>	1,3A / 2,7A		2,5A / 5,5A	
<b>Power at 10°C</b>	20W	30W	50W	75W
<b>Recommended fuse</b>	4A(t) / 6A(t)			

<b>Weight</b>	approx 150g
<b>Dimensions (LxWxD)</b>	100,5×70×23,4mm
<b>Protection type</b>	IP20
<b>Protection class</b>	II (Protective insulation)
<b>Operating temperature</b>	up to -40°C
<b>Storage temperature</b>	-40°C to +80°C
<b>Operating humidity/ Storage humidity</b>	< 90% RH (non-condensing)
<b>Heating element</b>	PTC-Heating element
<b>Mounting connection</b>	Clip for 35mm DIN rail; EN60715
<b>Type of connection</b>	Pressure clamp
<b>Housing material</b>	Aluminium profile, anodized
<b>Mounting position</b>	Vertical
<b>Certifications</b>	CE, UL-File: E317613

## TECHNICAL DRAWING (SPECIFICATION IN MM)



## INSTALLATION SITUATION



**Note:**

1. Without an external control unit, the heater may only be installed in a housing with internal dimensions of at least 600×300×200mm.
2. Depending on the touch protection variant, there may be reduced performance. With Touch-Protection approx. 10% and with the combination of Touch-Protection and Top-Protection approx. 15%

**STATUS: 08|2024**

The information on this datasheet contains descriptions and performance characteristics that may not always apply in the specific use case described or may change due to product development. The desired performance characteristics are only binding if expressly agreed upon at the time of contract conclusion. The mentioned technical data has been determined under laboratory conditions according to generally accepted testing procedures. Only to this extent are properties assured. The examination of suitability for the intended purpose or use under operating conditions lies with the customer. We do not provide any warranty for this. Errors, availability, and technical changes are subject to change without notice.