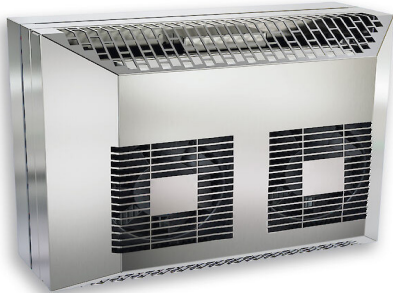


PELTIER-COOLING

ST-H 6105 / ST-A 6105



- Thermoelectric coolers
- Cooling without refrigerant
- Robust and reliable stainless steel design
- Flexible installation
- Protection type IP66 / UL Type 12, 4, 4X
- Maintenance-free
- Suitable for indoor and outdoor applications
- Accessories for condensate drainage and control systems available



With the Peltier cooling units of the ST series, we offer you an effective solution for industrial cooling based on the Peltier effect – without climate-damaging refrigerants. The cooling units can be flexibly installed, regardless of the installation position, as recessed or Wall-mounted variants. They fit many enclosures and offer outputs from 30 to 800 watts. This means they can be used for switch cabinets or control enclosures of various sizes. They also work reliably under adverse conditions such as oil mist, dust, or extreme temperatures from -20°C to +70°C. The IP66 protection rating ensures safety indoors and outdoors.

Note: Depending on the installation situation, condensate management must be taken into account separately and adjusted if necessary to ensure proper functioning.

TECHNICAL DATA

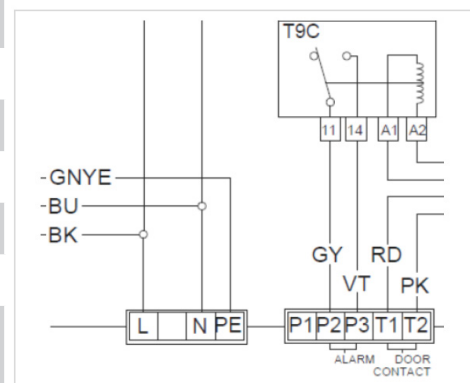
Art.-No.	920003	920103
Voltage ¹	230 V ~ 50/60 Hz	
Inrush current	0,8A	
Operating current	0,5A	
Cooling capacity L35 L35	100W	
Nominal power	125W	
Recommended fuse	1A (T)	
Air flow volume (system / unimpeded)	Ambient air circuit: 128 / 213m³/h Cabinet air circuit: 46 / 90m³/h	
Protection type	IP66 / UL Type 12, 4, 4X	
Type of connection	4-pole power connector 5-pole connector for signals	
Operating temperature range	-20°C bis +70°C	
UL temperature range	-20°C bis +65°C	
Storage temperature	-40°C bis +70°C	
Mounting connection	Recessed	Wall mounted (with frame)
Dimensions (AxBxC (D+E))	281×353×175 (107+68)mm	281×353×175mm
Weight	9,4kg	11kg
Cut out dimensions	322×252mm	350×280mm
Housing material ²	Stainless steel AISI 304 (V2A)	
Integrated control	Display of measured temperature via a display Setting options: Cooling setpoint, high temperature setpoint, low temperature setpoint	
Certifications	CE, UKCA, cURus	

(1) Part number for connection voltage 120V ~ 60 Hz on request.

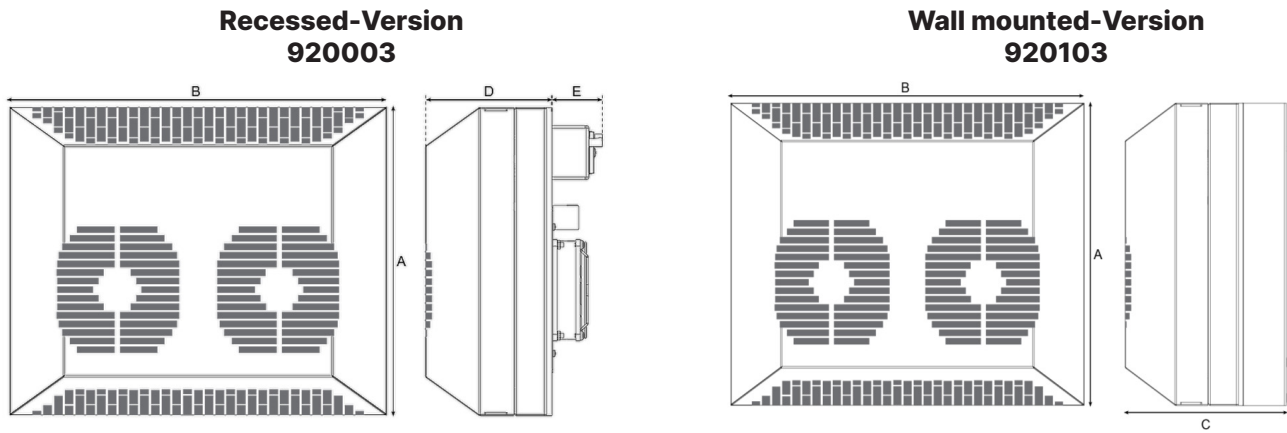
(2) Part number for stainless steel version (AISI 316 (V4A)) available on request.

The information on this datasheet contains descriptions and performance characteristics that may not always apply in the specific use case described or may change due to product development. The desired performance characteristics are only binding if expressly agreed upon at the time of contract conclusion. The mentioned technical data has been determined under laboratory conditions according to generally accepted testing procedures. Only to this extent are properties assured. The examination of suitability for the intended purpose or use under operating conditions lies with the customer. We do not provide any warranty for this. Errors, availability, and technical changes are subject to change without notice.

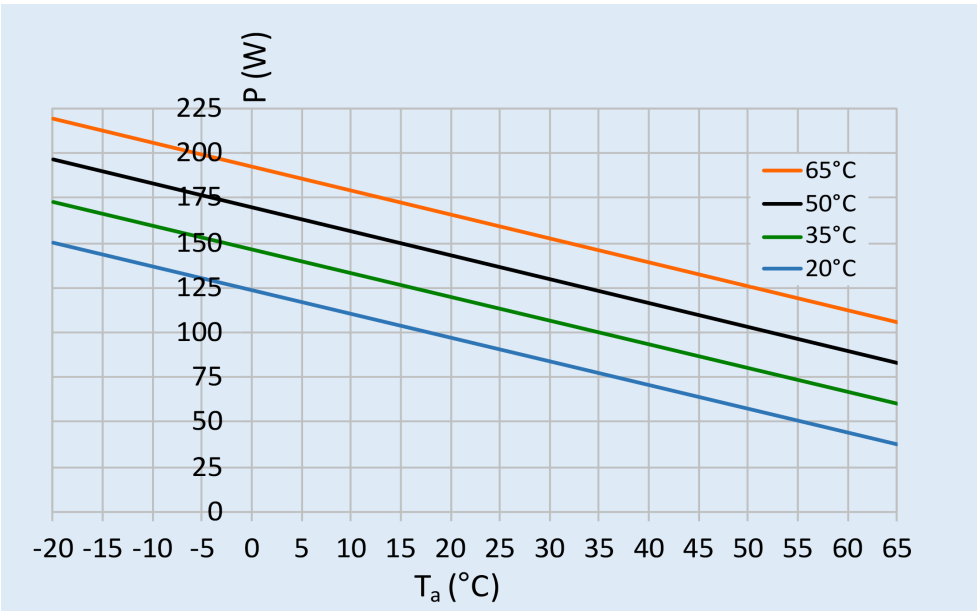
WIRING DIAGRAM



**TECHNICAL DRAWING
(SPECIFICATION IN MM)**



PERFORMANCE GRAPH



ACCESSORIES:

Art.-Nr.	Bezeichnung	Abbildung
920802	Peltier Condensat kit for ST6105	
960000	Condensation drain socket IP66	
940901	Door contact switch with installation plate	

STATUS: 08|2025

The information on this datasheet contains descriptions and performance characteristics that may not always apply in the specific use case described or may change due to product development. The desired performance characteristics are only binding if expressly agreed upon at the time of contract conclusion. The mentioned technical data has been determined under laboratory conditions according to generally accepted testing procedures. Only to this extent are properties assured. The examination of suitability for the intended purpose or use under operating conditions lies with the customer. We do not provide any warranty for this. Errors, availability, and technical changes are subject to change without notice.