

PELTIER-COOLING

ST-H 6155 / ST-A 6155



- Thermoelectric coolers
- Cooling without refrigerant
- Robust and reliable stainless steel design
- Flexible installation
- Protection type IP66 / UL Type 12, 4, 4X
- Maintenance-free
- Suitable for indoor and outdoor applications
- Accessories for condensate drainage and control systems available



COOLING

The ST series of our Peltier coolers is based on thermoelectric cooling using the Peltier effect and does not require any refrigerants. The devices are ideal for industrial applications and can be flexibly mounted in various positions, either as Wall-mounted or recessed versions. With a power range from 30W to 800W, they cover a wide range of cooling tasks, from small control boxes to large enclosures. They also offer reliable operation at ambient temperatures between -20°C and +70°C and in dirty environments. The IP66 protection rating allows for use both outdoors and indoors.

Note: Depending on the installation situation, condensate management must be taken into account separately and adjusted if necessary to ensure proper functioning.

TECHNICAL DATA

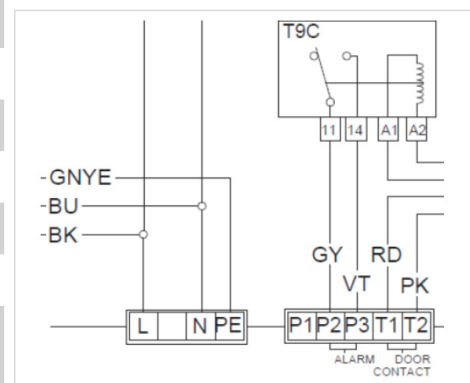
Art.-No.	920007	920107
Voltage ¹	230 V ~ 50/60 Hz	
Inrush current	1,1A	
Operating current	0,7A	
Cooling capacity L35 L35	150W	
Nominal power	170W	
Recommended fuse	2A (T)	
Air flow volume (system / unimpeded)	Ambient air circuit: 120 / 260m³/h Cabinet air circuit: 60 / 170m³/h	
Protection type	IP66 / UL Type 12, 4, 4X	
Type of connection	4-pole power connector 5-pole connector for signals	
Operating temperature range	-20°C bis +70°C	
UL temperature range	-20°C bis +65°C	
Storage temperature	-40°C bis +70°C	
Mounting connection	Recessed	Wall mounted (with frame)
Dimensions (AxBxC (D+E))	500×333×181 (113+68)mm	500×333×187mm
Weight	18kg	19kg
Cut out dimensions	302×472mm	244×428mm
Housing material ²	Stainless steel AISI 304 (V2A)	
Integrated control	Display of measured temperature via a display Setting options: Cooling setpoint, high temperature setpoint, low temperature setpoint	
Certifications	CE, UKCA, cURus	

(1) Part number for connection voltage 120V ~ 60 Hz on request.

(2) Part number for stainless steel version (AISI 316 (V4A)) available on request.

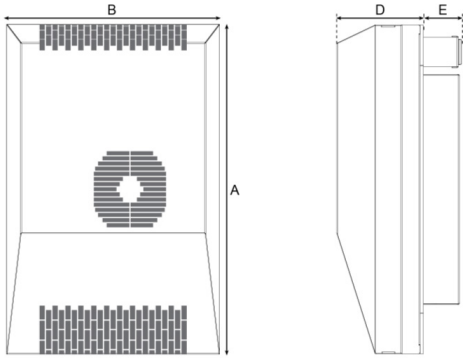
The information on this datasheet contains descriptions and performance characteristics that may not always apply in the specific use case described or may change due to product development. The desired performance characteristics are only binding if expressly agreed upon at the time of contract conclusion. The mentioned technical data has been determined under laboratory conditions according to generally accepted testing procedures. Only to this extent are properties assured. The examination of suitability for the intended purpose or use under operating conditions lies with the customer. We do not provide any warranty for this. Errors, availability, and technical changes are subject to change without notice.

WIRING DIAGRAM

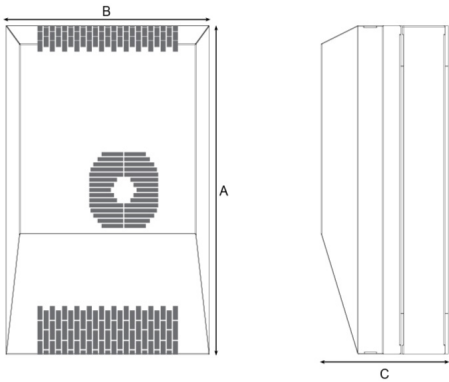


**TECHNICAL DRAWING
(SPECIFICATION IN MM)**

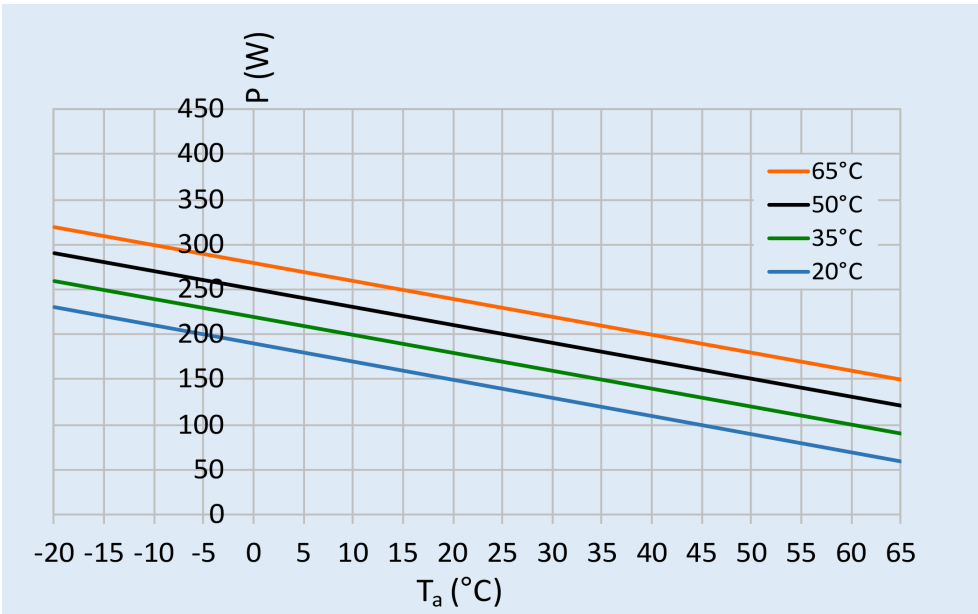
**Recessed-Version
920007**



**Wall mounted-Version
920107**



PERFORMANCE GRAPH



ACCESSORIES:

Art.-Nr.	Bezeichnung	Abbildung
920801	Peltier Condensat kit for ST3102/6155/6205	
960000	Condensation drain socket IP66	
940901	Door contact switch with installation plate	

STATUS: 08|2025

The information on this datasheet contains descriptions and performance characteristics that may not always apply in the specific use case described or may change due to product development. The desired performance characteristics are only binding if expressly agreed upon at the time of contract conclusion. The mentioned technical data has been determined under laboratory conditions according to generally accepted testing procedures. Only to this extent are properties assured. The examination of suitability for the intended purpose or use under operating conditions lies with the customer. We do not provide any warranty for this. Errors, availability, and technical changes are subject to change without notice.